



Mucoid Specimens

(Respiratory and gastrointestinal specimens)



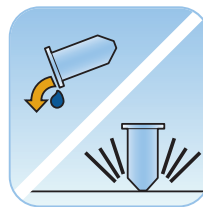
1) Collection

Collect sample directly into 30ml of CytoLyt® solution OR add 30ml of CytoLyt solution to the fresh specimen as soon as possible.

Note: Large specimens (greater than 20ml) should be concentrated before addition of CytoLyt solution to the sample.

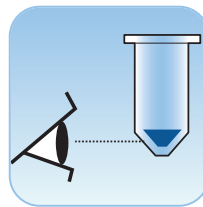
If DTT is being used with respiratory mucoid samples, add stock before agitation. See below for preparation instructions.

The use of Dithiothreitol (DTT) has shown to reduce the amount of mucus present in respiratory samples^{1,2}. To use DTT with the ThinPrep system prepare a stock solution by adding 2.5g DTT to 30ml of CytoLyt solution. This solution is suitable for use for 1 week when stored at room temperature (15-30°C). Add 1ml of stock solution to the sample.



4) Pour Off Supernatant and Resuspend Cell Pellet

Resuspension can be done on a vortexor or may be achieved by syringing the pellet back and forth with a plastic pipette.

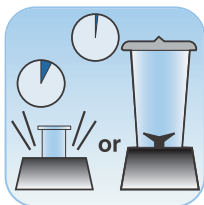


5) Evaluate Cell Pellet Appearance

Confirm the cell pellet is in liquid form. If the cell pellet is not in liquid form, add 30ml of CytoLyt solution and repeat steps 2-4.



6) Add Specimen to PreservCyt® Solution Vial

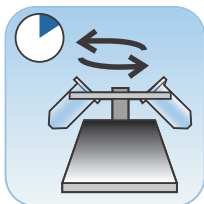


2) Mechanical Agitation

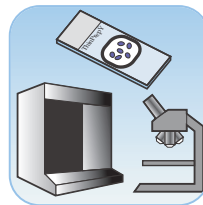
Note: Vortex for a minimum of 5 minutes in "hands-free" vortexor.



7) Allow to Stand in PreservCyt Solution for 15 Minutes



3) Concentrate by Centrifugation (600g for 10 minutes)

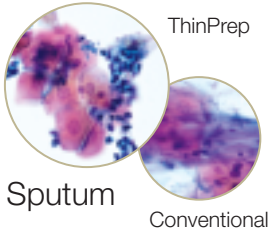


8) Run on ThinPrep Processor Using Sequence 3 (Mucoid) (Fix, stain, and evaluate)

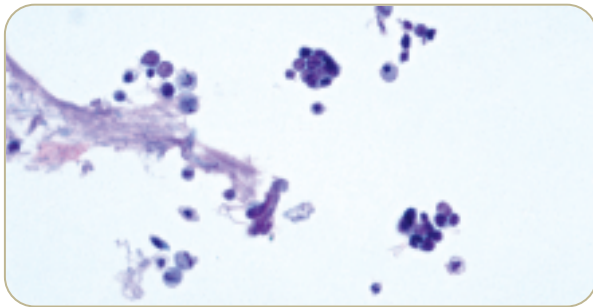
1. Tockman, MS et al., Safe Separation of Sputum Cells from Mucoid Glycoprotein, Acta Cytologica 39, 1128 (1995).

2. Tang, CS et al., Dithiothreitol Homogenization of Prefixed Sputum for Lung Cancer Detection, Diagnostic Cytopathology, 10, 76 (1994.)

Refer to the ThinPrep processor operator's manual for detailed instrument and specimen preparation instructions. See section D and E for details.

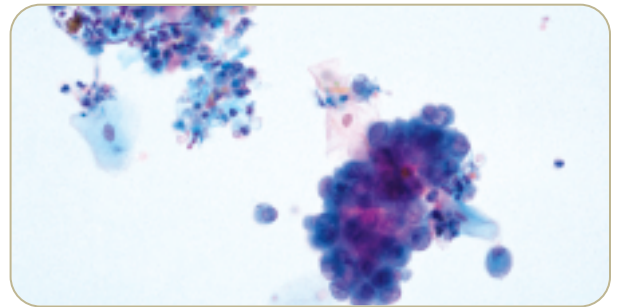


- Control cellular density
- Eliminate preparation artifact
- Minimize number of slides per patient
- Eliminate mucoid glycoprotein



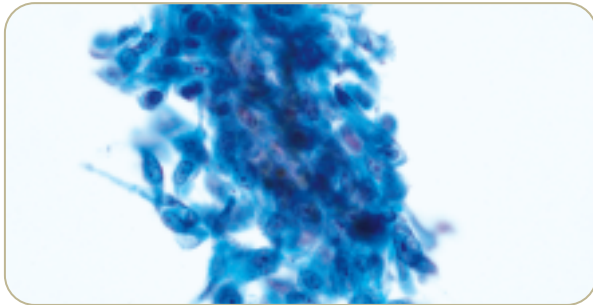
Sputum

40x



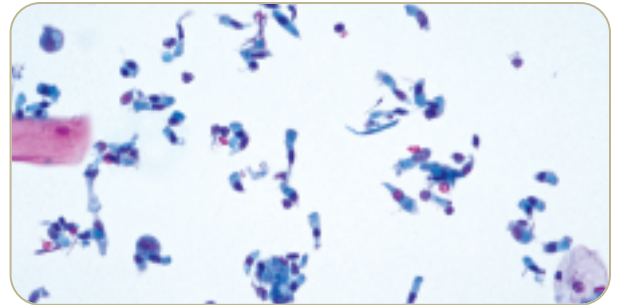
Sputum

40x



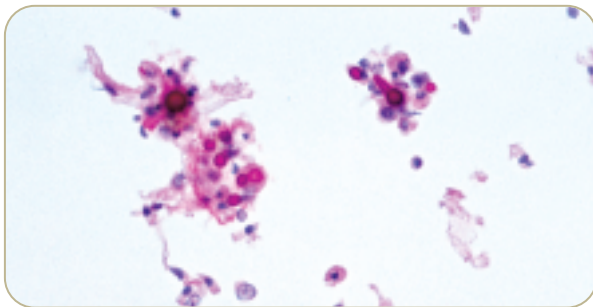
Bronchial Brush

40x



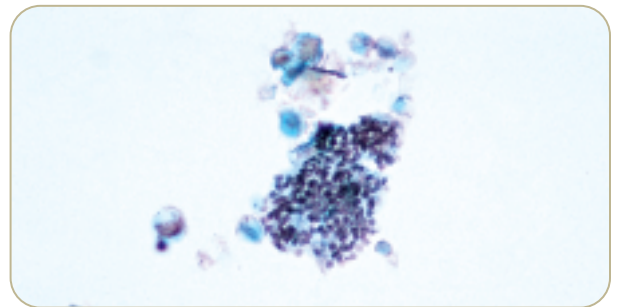
Bronchial Brush

40x



Bronchial Wash – Mucicarmine

40x



Bronchial Wash – Silver

40x