

Cytec Corporation - Case Presentation Archive - May 2000

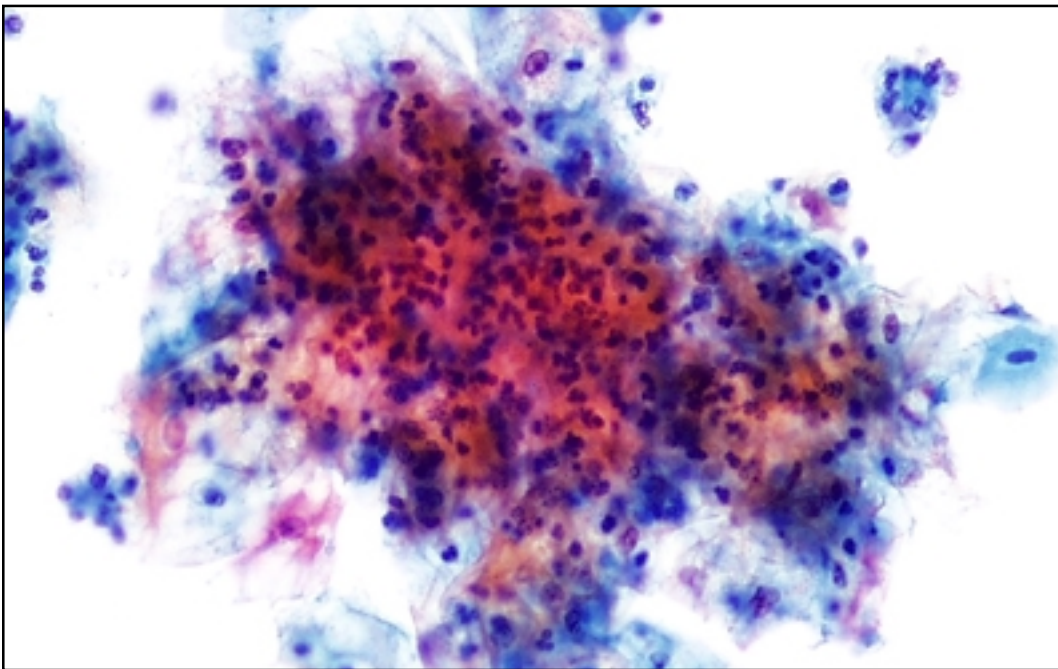
ThinPrep®PapTest™

History: 21 Years Old

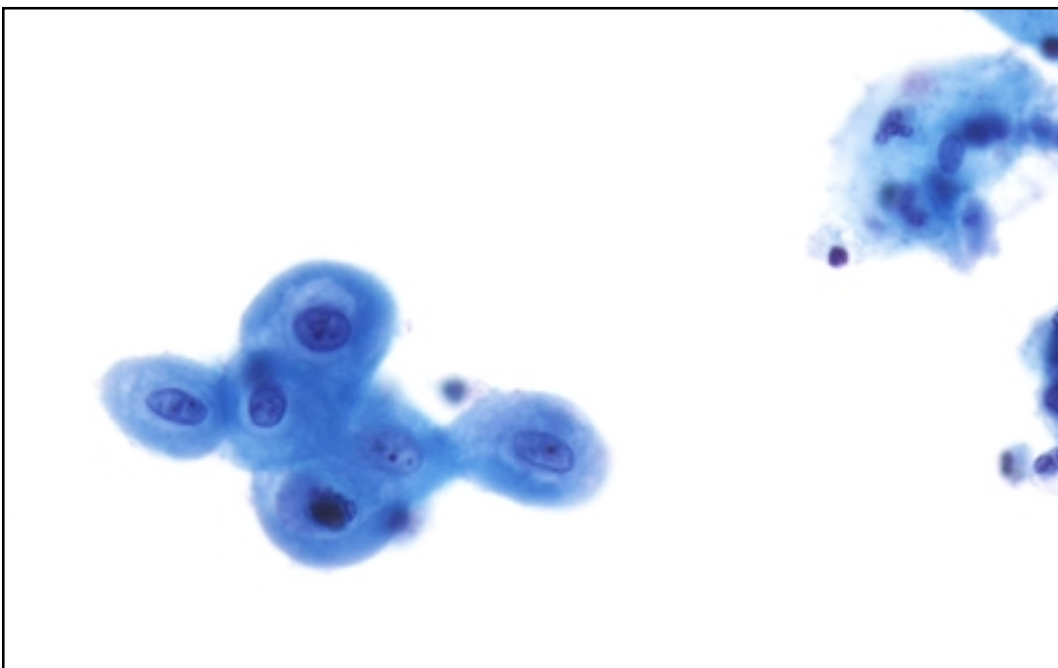
LMP: Day 1

Case provided by Mark Catlin, MD, Three Rivers Pathology, Roseville, Minnesota.

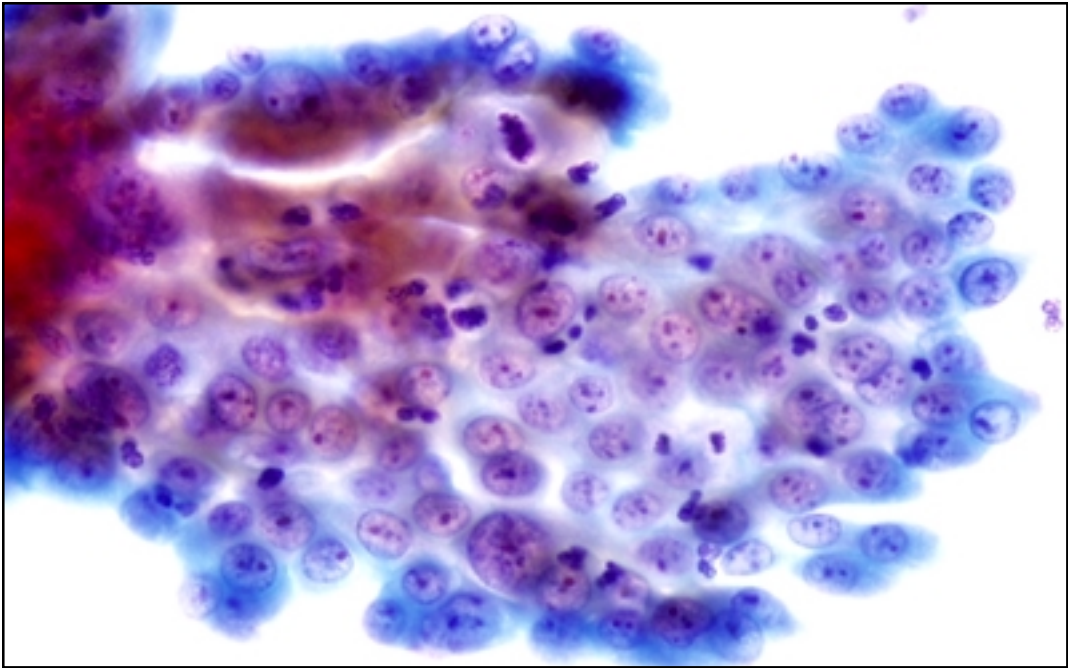
*The images, analysis and diagnosis for this case study were provided by an independent physician. All conclusions and opinions are those of the physician and not Cytec Corporation.



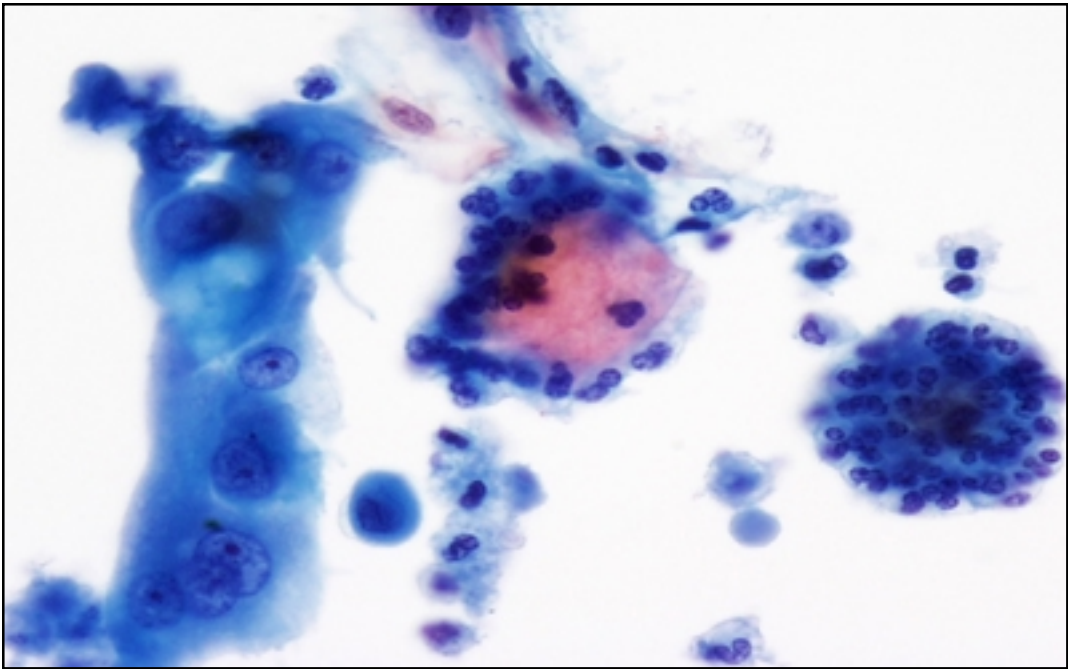
Slide 1



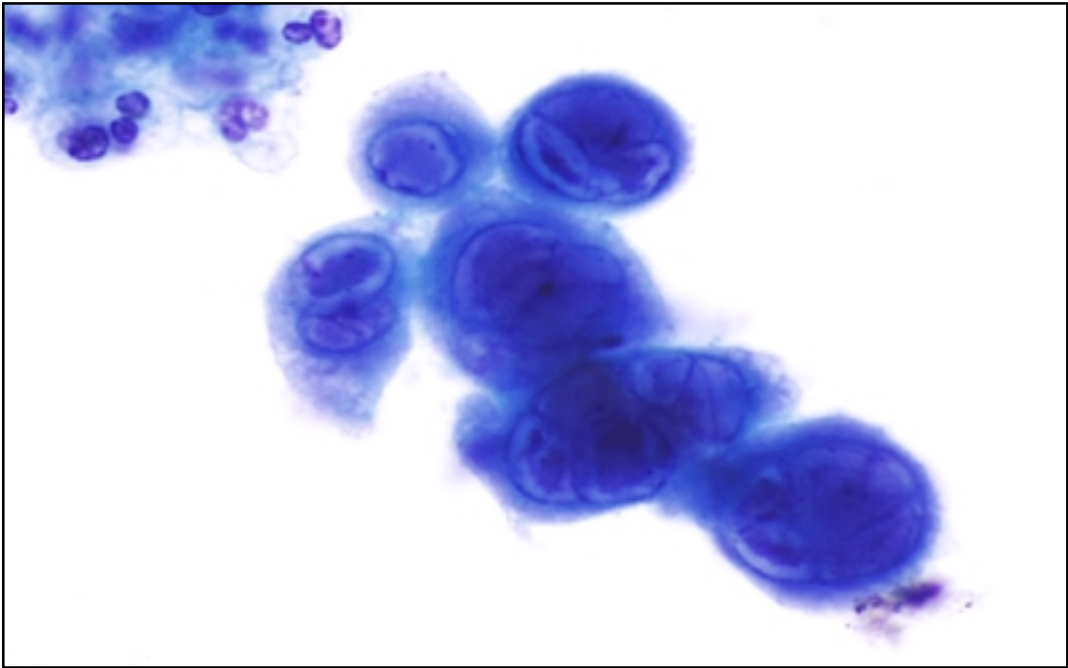
Slide 2



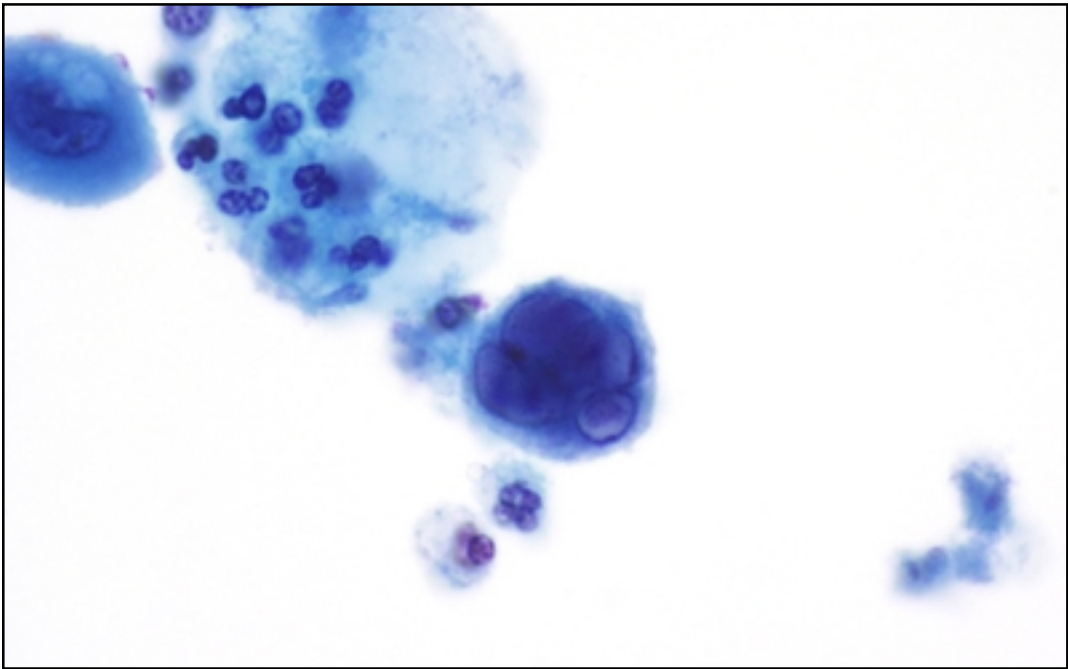
Slide 3



Slide 4



Slide 5



Slide 6

Cytec Corporation - Case Presentation Archive - May 2000

Discussion:

Slide 1: Mature squamous cells infiltrated with neutrophils. Note the “moth eaten” look to the cytoplasm which often accompanies an inflammatory process.

Slide 2: Mature squamous metaplastic cells with slightly reactive nuclei.

Slide 3: Flat sheet of reactive cells showing a reparative process. Repair on ThinPrep® slides tends to have a more rounded appearance. The cell groupings are not “pulled out” from smearing artifact. Each nucleus has an adequate amount of cytoplasm around it; cell borders are distinct; polarity is maintained; nuclei are round with prominent nucleoli and smooth nuclear borders.

Slide 4: Trichomonas vaginalis organisms are apparent adjacent to a commonly seen “poly ball.”

Slide 5: Cell groups show the classic viral changes of Herpes infection.

Slide 6: A field showing evidence of both Trichomonas and herpetic changes.

Often cytotechnologists are uncomfortable with the clarity of inflammatory changes when first screening ThinPrep slides. Inflammatory changes are common with Trichomonas vaginalis and Candida spp. Repair often accompanies an infectious process. There is a range of cellular changes for Herpes infection. Ultimately it is up to each laboratory to find their “comfort zone” for reactive changes and establish their threshold for ASCUS, favor a reactive process. This is accomplished as the number of ThinPrep slides screened increases and as clinical and biopsy follow-up information is correlated with initial diagnoses.

Cytologic Diagnosis: Specimen Adequacy: Satisfactory for evaluation

Diagnostic Category: Benign Cellular Changes

Descriptive Diagnosis: Cellular changes of Herpes Virus Infection; Trichomonas Vaginalis organism present; cellular changes of repair.