

# Cytec Corporation - Case Presentation Archive - November 1999

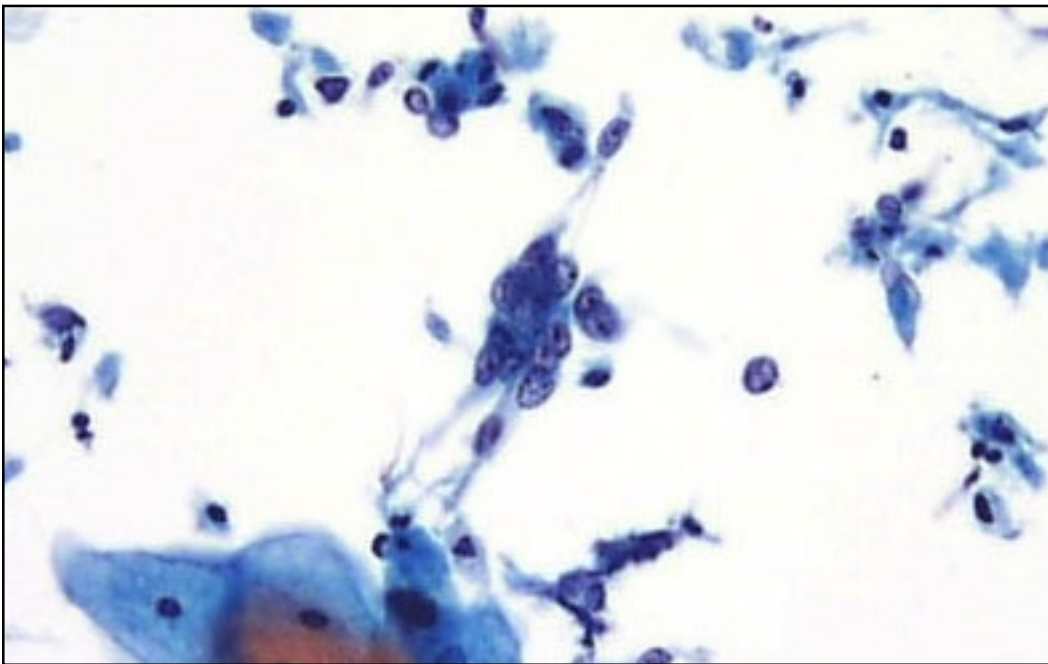
**ThinPrep®PapTest™**

**History:** 42 Years Old

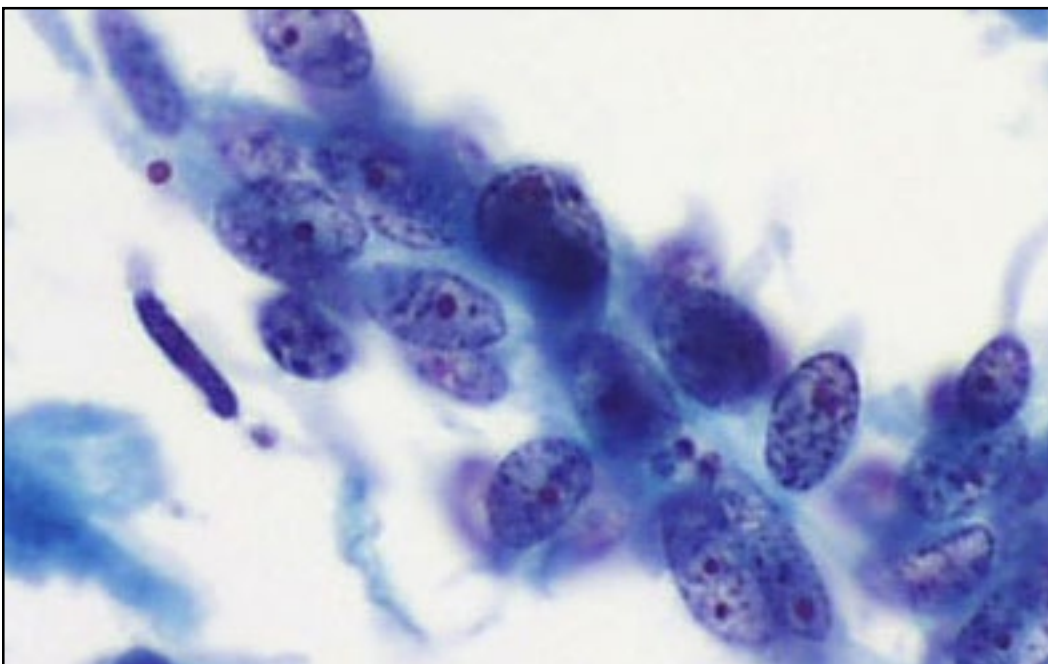
**Prior Pap:** "Normal"

Case provided by TPPT customer of CYTYC Corporation who wishes to remain anonymous.

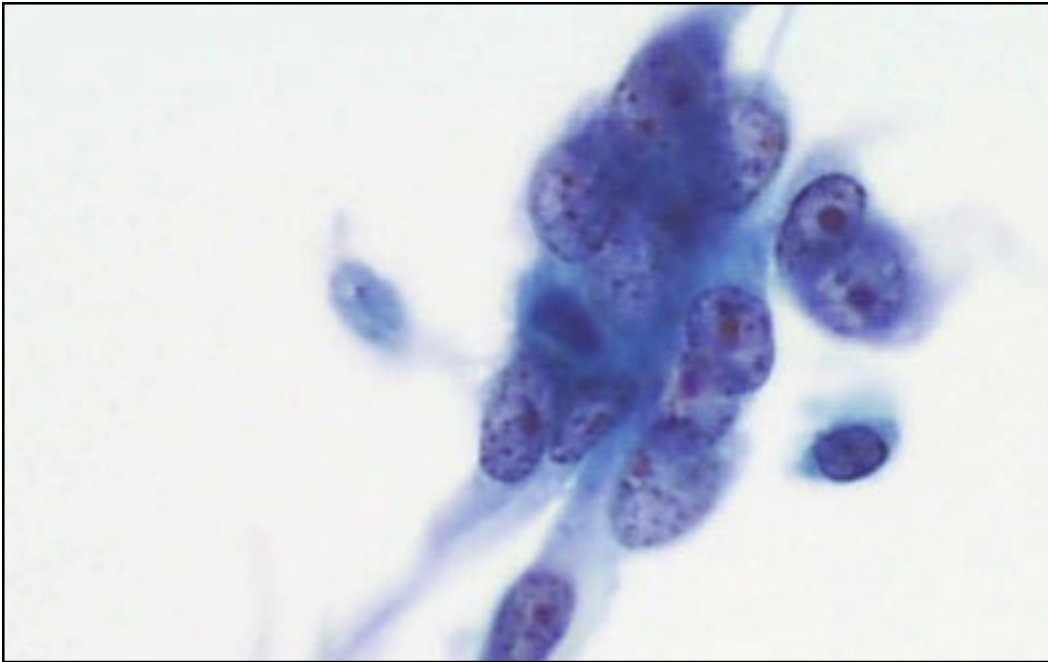
\*The images, analysis and diagnosis for this case study were provided by an independent physician. All conclusions and opinions are those of the physician and not Cytec Corporation.



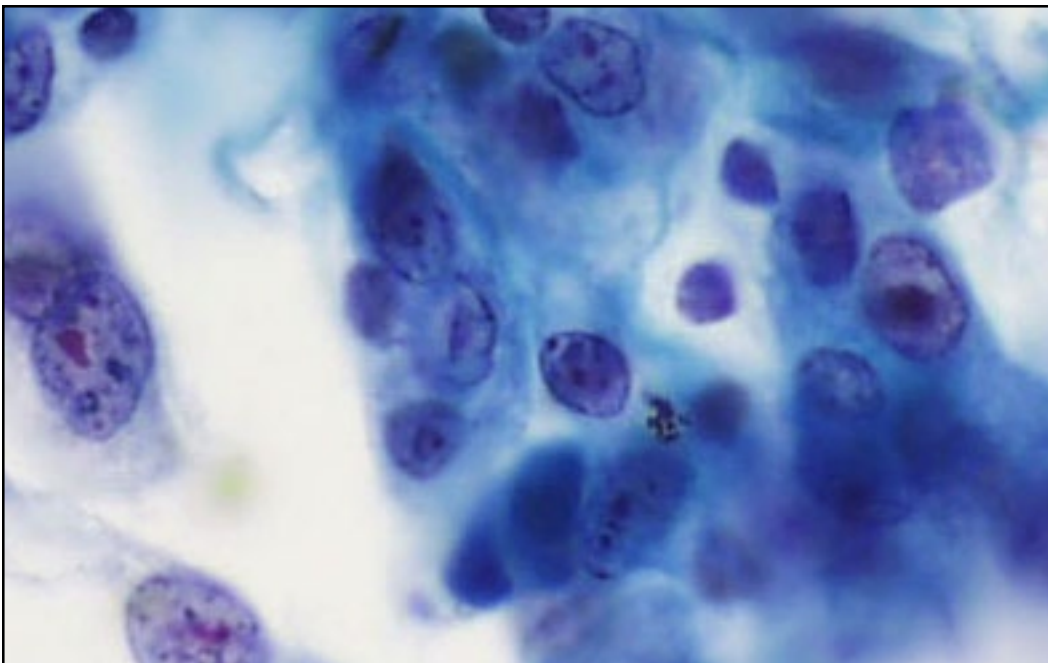
Slide 1



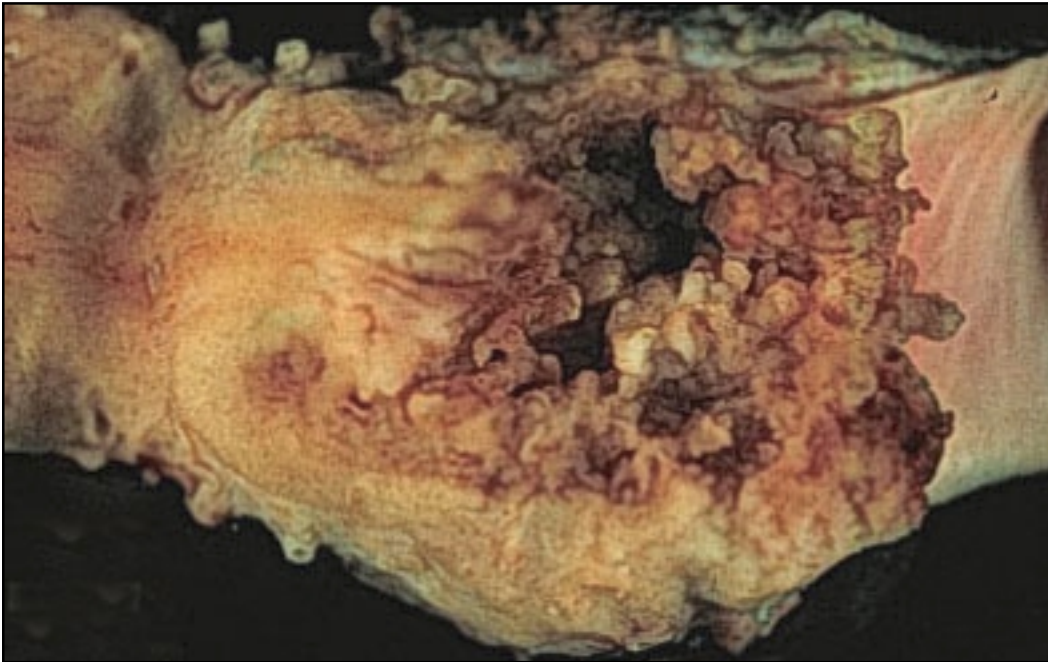
Slide 2



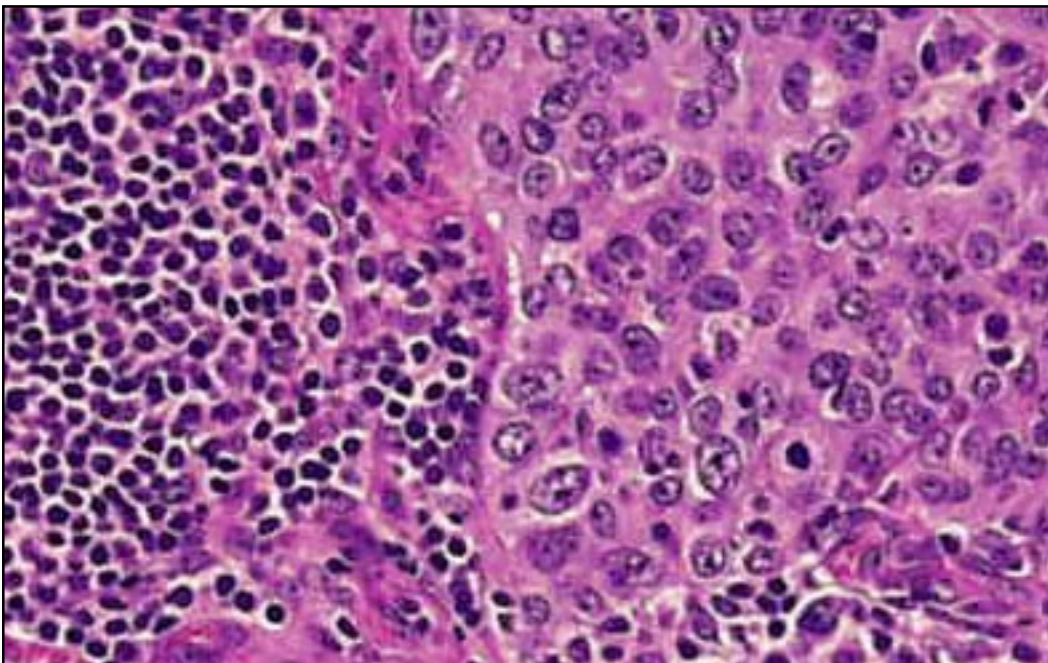
Slide 3



Slide 4



Slide 5



Slide 6

# Cytec Corporation - Case Presentation Archive - November 1999

## **Discussion:**

Slide 1: Mature benign squamous cells adjacent to spindled cells with malignant nuclei and necrotic debris in the background.

Slide 2: Syncytium of malignant cells with prominent nucleoli, irregular, coarse chromatin and thickened nuclear envelopes.

Slide 3: Similar cells possibly forming an acinus. Some cells appear spindled or elongate.

Slide 4: Malignant cells with cytoplasm showing some squamous differentiation. Note the dense cytoplasm, distinct cytoplasmic borders and centrally located nuclei.

Slide 5: Gross photograph of fungating lesion.

Slide 6: Tissue section of pelvic lymph node.

## **Cytologic Diagnosis:**

Specimen Adequacy: Satisfactory for evaluation

Squamous Cell Abnormality

Positive for malignant cells

Poorly differentiated squamous carcinoma

## **Tissue Diagnosis:**

Cervical Carcinoma with metastasis to pelvic lymph node.

High-grade non-keratinizing large cell squamous carcinoma,

Grade 3, FIGO stage Ib2.