

Cytec Corporation - Case Presentation Archive - June 1999

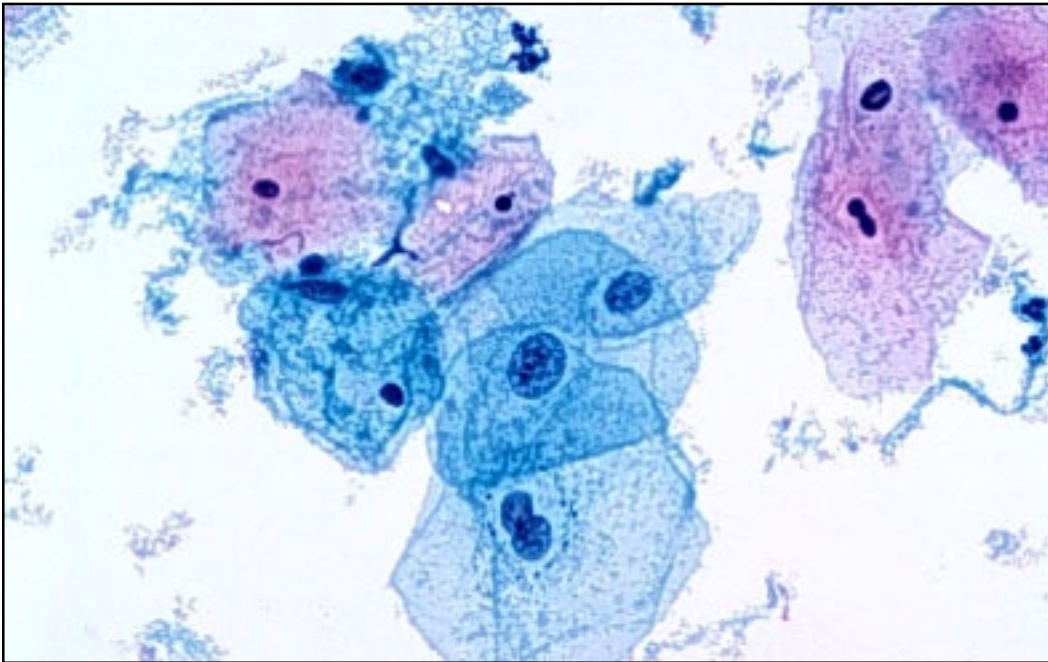
ThinPrep®PapTest™

History: 34 Years Old, history of cervical cancer

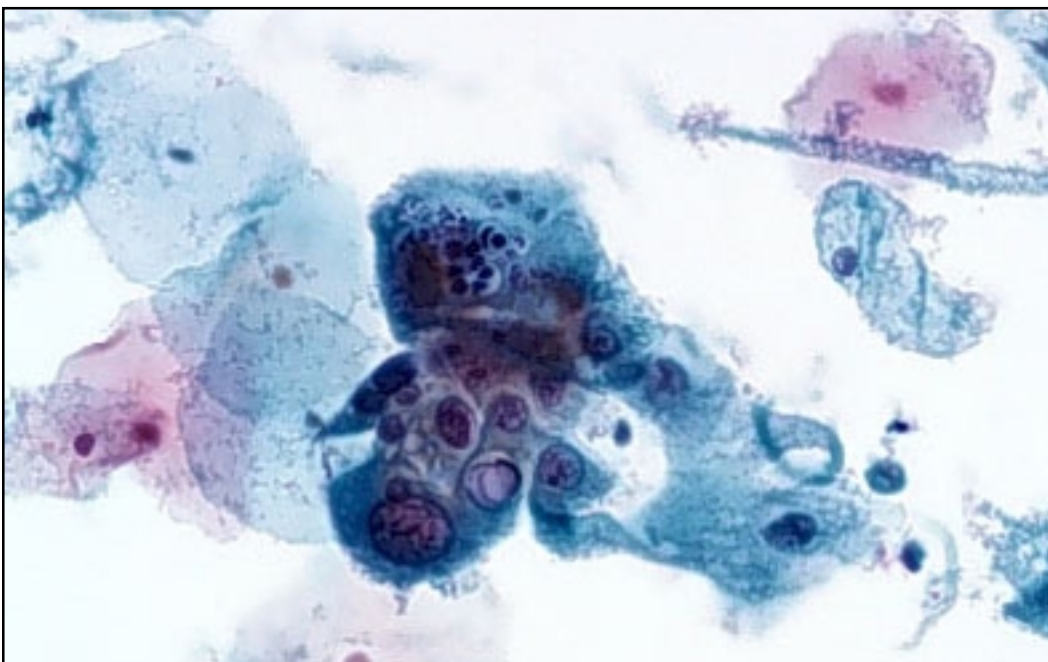
LMP: Not provided

Case provided by Diane Davey, MD, University of Kentucky

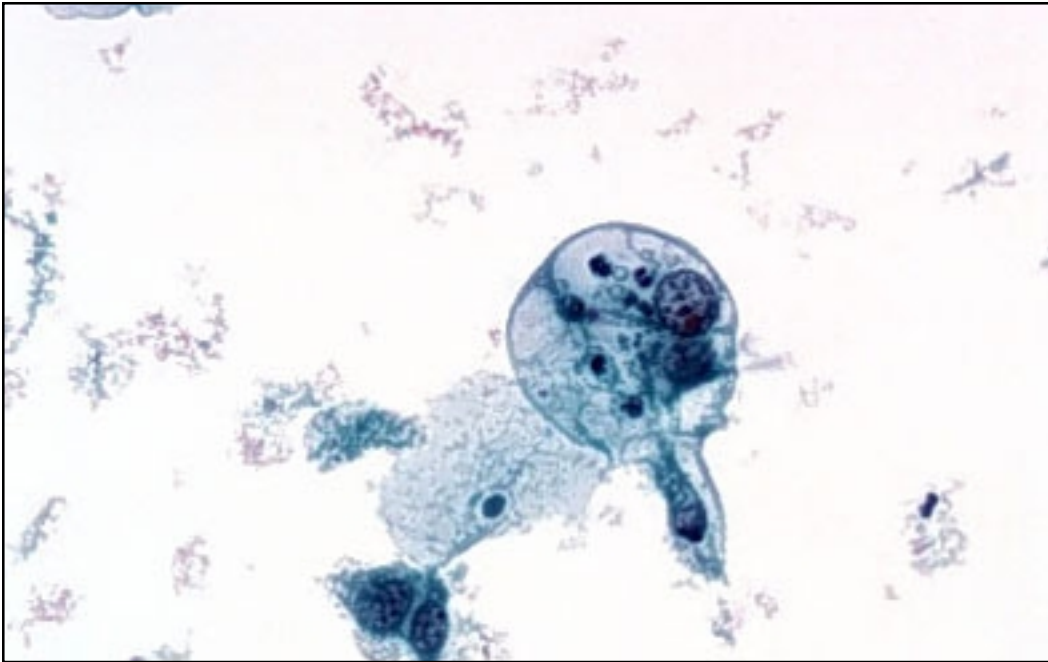
*The images, analysis and diagnosis for this case study were provided by an independent physician. All conclusions and opinions are those of the physician and not Cytec Corporation.



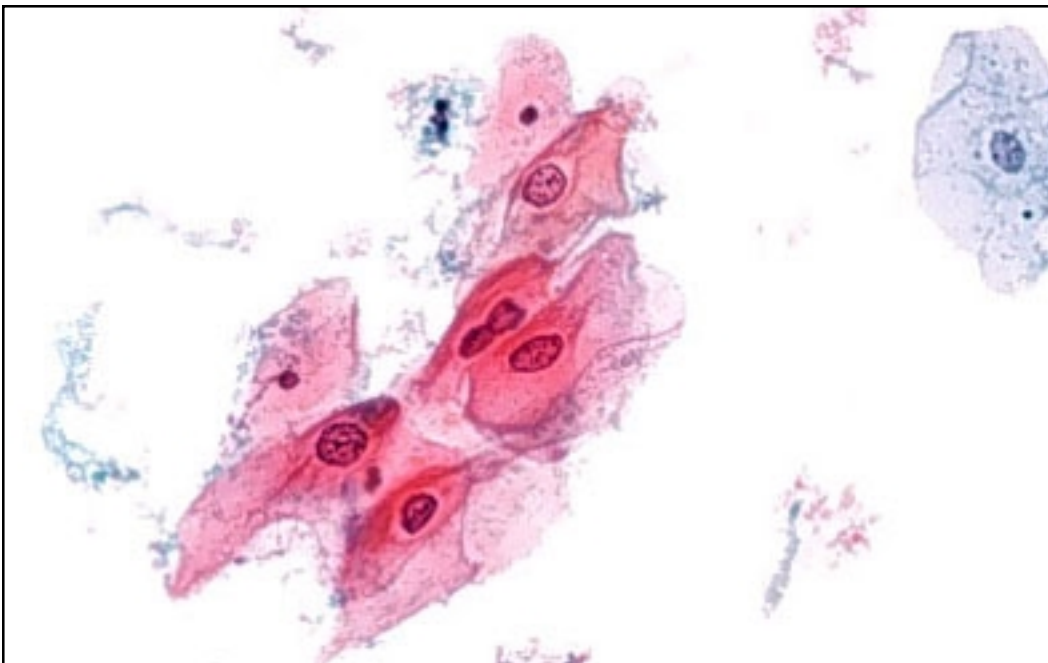
Slide 1



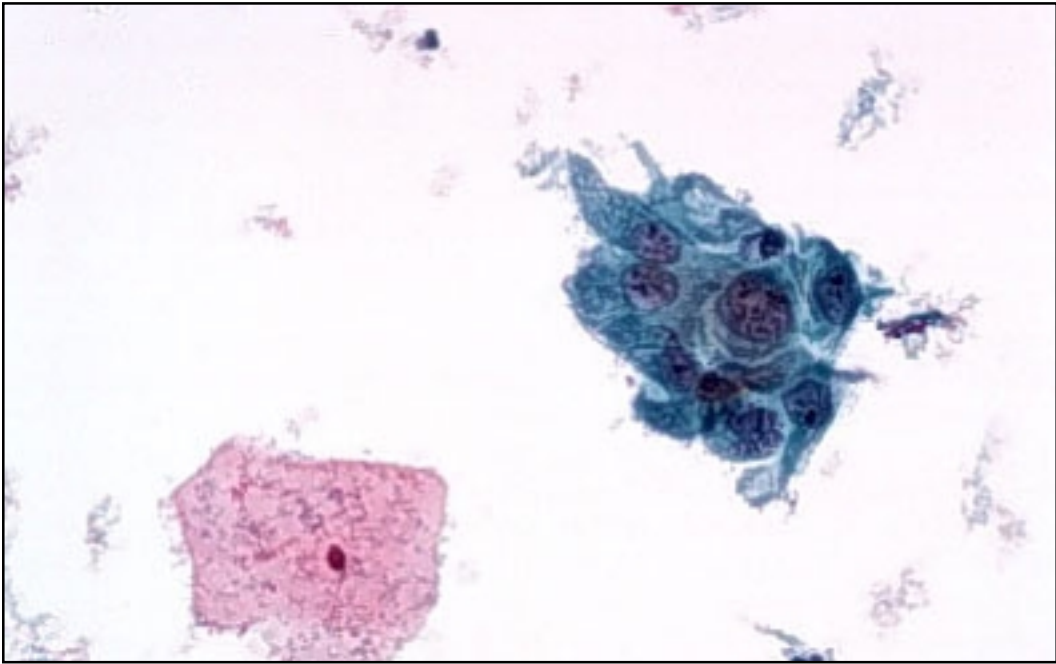
Slide 2



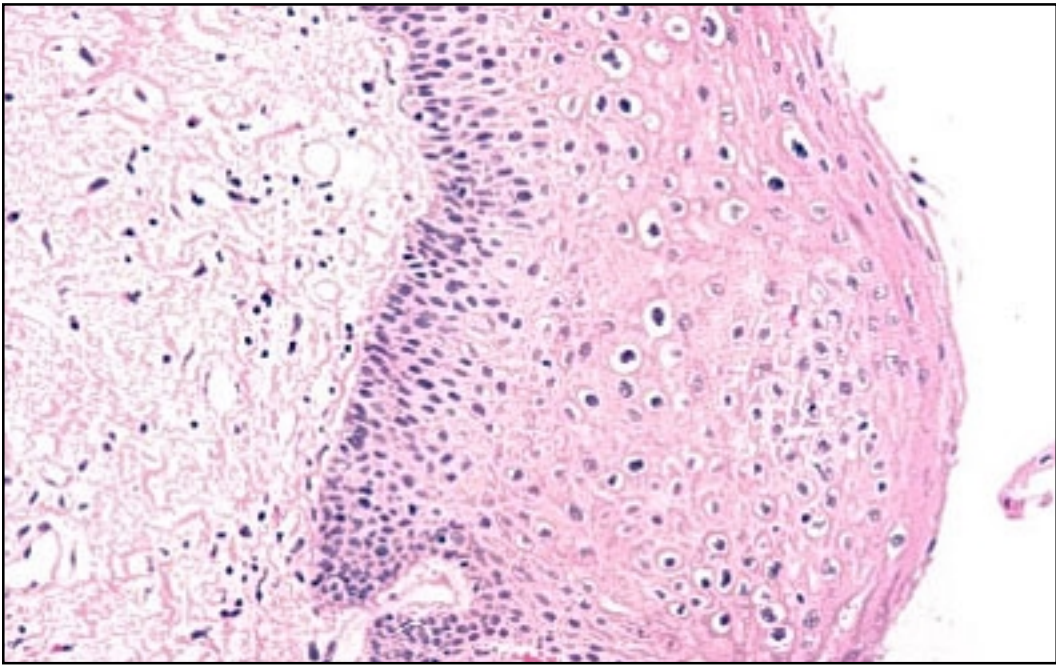
Slide 3



Slide 4



Slide 5



Slide 6

Cytec Corporation - Case Presentation Archive - June 1999

Discussion:

Slide 1: Superficial squamous cells showing bi-nucleation and enlarged nuclei.

Slide 2: Metaplastic cells with varied sized nuclei, also showing vacuolization and engulfed polys.

Slide 3: Single enlarged cell exhibiting multiple cytoplasmic vacuoles, engulfed polys and debris and irregular cell shape.

Slide 4: Keratinized mature squamous cells exhibiting binucleation and slightly enlarged nuclei with slight hyperchromasia.

Slide 5: Metaplastic cells with vacuolated cytoplasm, enlarged hyperchromatic nuclei with somewhat prominent nucleoli.

Slide 6: A tissue fragment showing squamous epithelium which demonstrates disordered maturation in the basilar portion. Occasional multinucleated cells are seen and the underlying stroma is fibrotic and contains occasional fibroblasts consistent with radiation change.

Cytologic Diagnosis:

Specimen Adequacy: Satisfactory for evaluation

Squamous Cell Abnormality

SIL, (possible high grade) and radiation effect.

Tissue Diagnosis:

Cervical biopsy, 3 and 7 o'clock: Radiation change, mild epithelial dysplasia.

No high grade dysplasia identified.